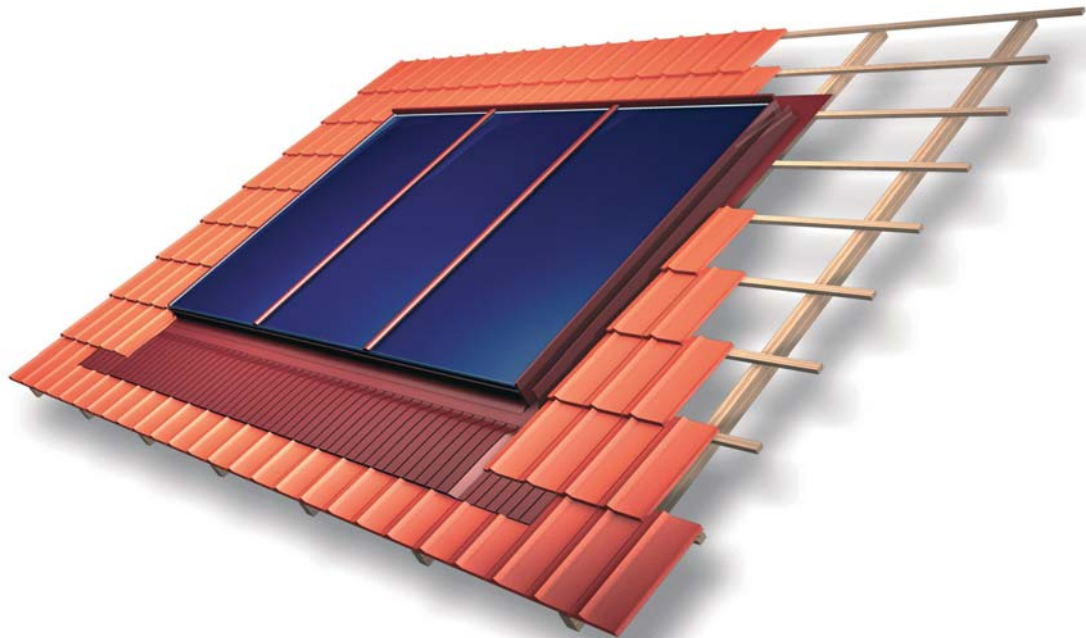


# PHÖNIX HRK 2.1


Wooden frame collector  
Gross area 2.08 m<sup>2</sup>



- **Wooden frame collector allows for full integration into the roof structure**
- **Vacuum coated collectors giving a high capacity**
- **Simple and quick installation**
- **Very good Price/Capacity-relationship**
- **Custom-made energy roof of individual compiled in roof collectors**

## Technical data

Gross area	2.08 m <sup>2</sup>
Absorber coating	eta plus_AI
Absorption	95 %
Optical efficiency	78,5 %
Weight	49 kg
Warranty	See general terms and conditions of sales of PHÖNIX SonnenWärme AG

Type	PHÖNIX HRK 2.1 (Wooden frame collector)
Minimum collector slope	Full surface absorber made of Aluminium with vacuum coating (eta plus Al)
Absorber	95 %
Optical efficiency	78.5 %
Emission grade	5 %
Thermal Loss	$k_1 = 3.95 \text{ W/m}^2 \text{ K}$ , $k_2 = 0.0148 \text{ W/m}^2 \text{ K}^2$
Stagnation temperature	208°C
Collector Material	Wooden collector frame is made from spruce insulated with 35 mm of temperature resistant mineral wool
Glass	3.2 mm Iron free solar safety glass
Test Certificates	Teste by ASIC Wels (A) according to EN 12975-2. Minimum collector yield verification of $>525 \text{ kWh} / (\text{m}^2 \text{ per year})$ .
Outer Dimensions (H x W x D)	1.996 x 1.043 x 0.092 m 
Weight	49 kg
Gross area	2.08 m <sup>2</sup>
Aperture area	1.89 m <sup>2</sup>
Effective absorber area	1.88 m <sup>2</sup>
Solar fluid volume	1.38 litres

- **Appropriate for solar domestic hot water supply and space heating**
- **Standard systems with collector field areas between 4 and 40 m<sup>2</sup>**
- **Suitable for both slate and tile roofs**
- **Adds value to any kind of house and building**

**PHÖNIX**   
SonnenWärme AG

Ostendstraße 1  
12459 Berlin - Germany  
Tel: +49 30 53 00 070  
Fax: +49 30 53 00 07 17  
info@sonnenwaermeag.de  
www.sonnenwaermeag.de